

COUNCILLOR OBJECTION & PETITION

COMMITTEE DATE: 19/06/2019

APPLICATION No. **18/03020/MJR**

APPLICATION DATE: 20/12/2018

ED: **ADAMSDOWN**

APP: TYPE: Full Planning Permission

APPLICANT: HALE COMSRUCTION & HAFOD HOUSING

LOCATION: FORMER GREAT EASTERN HOTEL

PROPOSAL: CONSTRUCTION OF 23 NO AFFORDABLE FLATS, ACCESS, LANDSCAPING AND ANCILLARY WORKS

RECOMMENDATION 1: That, subject to relevant parties entering into a binding legal agreement with the Council under the provisions of **SECTION 106** of the Town and Country Planning Act 1990, within 6 months of the date of this Resolution unless otherwise agreed by the Council in writing, in respect of matters detailed in paragraph 9 of this report, planning permission be **GRANTED** subject to the following conditions:

1. C01 Statutory Time Limit
2. The development shall be carried out in accordance with the following approved plans:
 - (SK) 001S Proposed site layout;
 - (SK)002T Proposed Floor Plans;
 - (SK)003P Proposed Elevations;
 - (SK)004M Proposed Elevations;
 - (SK) 005C Proposed Sections;

Reason: To ensure satisfactory completion of the development and for the avoidance of doubt in line with the aims of Planning Policy Wales to promote an efficient planning system.
3. Prior to their installation samples of the external finishing materials shall be submitted to and approved in writing by the Local Planning Authority. The development shall be carried out in accordance with the approved details. Reason: To ensure that the finished appearance of the development is in keeping with the area in accordance with Policy KP5 of the adopted Cardiff Local Development Plan (2006-2026).
4. Prior to beneficial occupation of the development hereby approved details of the means of enclosure shall be submitted to and approved in writing with the Local Planning Authority. The approved detail shall be implemented on site before the beneficial use of the dwellings hereby approved.

Reason: To ensure an acceptable form of development that is in keeping with the area in accordance with Policy KP5 of the adopted Cardiff Local Development Plan (2006-2026).

5. No development shall commence until a drainage scheme for the site has been submitted to and approved in writing by the Local Planning Authority. The scheme shall demonstrate how the site will be effectively drained, the means of disposal of surface water and indicate how foul flows will communicate to the existing public sewerage system. Details shall also include the management/maintenance of the drainage in the event that Welsh Water do not adopt drainage infrastructure. Thereafter, the scheme shall be implemented in accordance with the approved details prior to the occupation of the building and shall thereafter be retained.

Reason: To prevent hydraulic overloading of the public sewerage system, to protect the health and safety of existing residents and ensure no pollution of or detriment to the environment in accordance with Policy EN10 of the adopted Cardiff Local Development Plan (2006-2026).

6. No development, shall take place until full details of landscaping have been submitted to and approved in writing by the Local Planning Authority. These details shall include:

- A landscaping implementation programme.
- Scaled planting plans prepared by a qualified landscape architect.
- Proposed finished levels.
- Earthworks.
- Existing and proposed services and drainage above and below ground level.

Planting plans shall be supplemented by:

- Schedules of plant species, sizes, numbers or densities prepared by a qualified landscape architect.
- Scaled tree pit sectional and plan drawings prepared by a qualified landscape architect.
- Topsoil and subsoil specification for all planting types, including full details of soil assessment, protection, stripping, storage, handling, amelioration and placement to ensure it is fit for purpose. Where imported planting soils are proposed, full specification details shall be supplied, including certification in accordance with British Standards and interpretive reports by a soil scientist demonstrating fitness for purpose and a methodology for handling, amelioration and placement (including profile depths). Site won soil shall only be used for landscaping purposes where a Soil Resource Survey and Plan, prepared in accordance with the 2009 DEFRA Code, is submitted and approved, demonstrating that site won soil is fit for purpose.
- Planting methodology and post-planting aftercare methodology prepared by a qualified landscape architect.

The submitted details shall be consistent with other plans submitted in support of the application and the landscaping shall be carried out in

accordance with the approved design and implementation programme.

Reason: To enable the Local Planning Authority to determine that the proposals will maintain and improve the amenity and environmental value of the area, and to monitor compliance in accordance with Policy KP5 of the adopted Cardiff Local Development Plan.

- 7 Any trees, plants, or hedgerows which within a period of five years from the completion of the development die, are removed, become seriously damaged or diseased, or become (in the opinion of the Local Planning Authority) otherwise defective, shall be replaced in the current planting season or the first two months of the next planting season, whichever is the sooner, unless the Local Planning Authority gives written consent to any variation.

Reason: To maintain and improve the amenity of the area in accordance with Policies KP5 and EN8 of the adopted Cardiff Local Development Plan.

8. Notwithstanding the submitted plans prior to beneficial occupation details showing the provision of cycle parking spaces (which shall be designed to safe, secure and sheltered) shall be submitted to and approved in writing by the local planning authority. The approved details shall be implemented prior to the development being put into beneficial use. Thereafter the cycle parking spaces shall be maintained and shall not be used for any other purpose.

Reason: To ensure that adequate provision is made for the secure parking of cycles in accordance with Policy T5 of the adopted Cardiff Local Development Plan.

9. Notwithstanding the submitted plans prior to beneficial occupation details showing the provision of refuse provision (which shall include an area for bulky goods to be stored for collection) have been submitted to and approved in writing by the local planning authority. The approved details shall be implemented prior to the development being put into beneficial use. Thereafter the refuse provision shall be maintained and shall not be used for any other purpose.

Reason: To ensure that adequate provision is made for the secure parking of cycles in accordance with Policy W2 of the adopted Cardiff Local Development Plan.

10. No development shall commence, including any works of demolition, until a Construction Method Statement (CMS) has been submitted to and approved in writing by the Local Planning Authority. The approved CMS shall be adhered to throughout the construction period. The CMS shall provide for:

- (i) The parking of vehicles of site operatives and visitors;
- (ii) Loading and unloading of plant and materials;
- (iii) Storage of plant and materials used on constructing the development;
- (iv) The erection and maintenance of security hoarding including

- decorative displays and facilities for public viewing, where appropriate; (v) Details of highways/footway closures;
- (vi) Wheel washing facilities;
 - (vii) A dust assessment with measures to monitor and control the emission of dust and dirt during demolition and construction; and
 - (viii) A scheme for the recycling/disposing of waste resulting from demolition and construction works.

Reason: In the interests of highway safety and public amenity.

11. No part of the development hereby permitted shall be occupied until a travel plan which shall include, but not limited to, the promotion of public transport and other alternatives to the private car;, provision of a named travel plan co-ordinator, has been submitted to and approved in writing by the Local Planning Authority.

The plan shall be presented to all new residents and be monitored for a period of five years following occupation of the final dwelling.

Reason: In the interest of highway safety and to regulate the impact of the development on use of the adjacent highway in accordance with Policy T5 of the Cardiff Local Development Plan.

12. Prior to occupation of any part of the development hereby approved details of appropriate gas protection measures to ensure the safe and inoffensive dispersal or management of gases and to prevent lateral migration of gases into or from land surrounding the application site shall be submitted to and approved in writing to the LPA.

All required gas protection measures shall be installed and appropriately verified before occupation of any part of the development which has been permitted and the approved protection measures shall be retained and maintained until such time as the Local Planning Authority agrees in writing that the measures are no longer required.

* 'Gases' include landfill gases, vapours from contaminated land sites, and naturally occurring methane and carbon dioxide, but does not include radon gas. Gas Monitoring programmes should be designed in line with current best practice as detailed in CIRIA 665 and or BS8485 year 2007 Code of Practice for the Characterization and Remediation from Ground Gas in Affected Developments.

Reason: To ensure that the safety of future occupiers is not prejudiced in accordance with Policy EN13 of the Cardiff Local Development Plan.

13. Prior to the construction phase of the development an assessment of the nature and extent of contamination shall be submitted to and approved in writing by the Local Planning Authority. This assessment must be carried out by or under the direction of a suitably qualified competent person * in accordance with BS10175 (2011) Code of Practice for the Investigation of Potentially Contaminated Sites and shall assess any contamination on the site, whether or not it originates on the site.

The report of the findings shall include:

- (i) an intrusive investigation to assess the extent, scale and nature of contamination which may be present;
- (ii) an assessment of the potential risks to:
 - human health,
 - groundwaters and surface waters
 - adjoining land,
 - property (existing or proposed) including buildings, crops, livestock, pets, woodland and service lines and pipes,
 - ecological systems,
 - archaeological sites and ancient monuments; and
 - any other receptors identified at (i)
- (iii) an appraisal of remedial options, and justification for the preferred remedial option(s).

All work and submissions carried out for the purposes of this condition must be conducted in accordance with DEFRA and the Environment Agency's 'Model procedures for the Management of Land Contamination, CLR 11' (September 2004) and the WLGA / WG / NRW guidance document ' Land Contamination: A guide for Developers' (2017),, unless the Local Planning Authority agrees to any variation.

* A 'suitably qualified competent person' would normally be expected to be a chartered member of an appropriate professional body (such as the Institution of Civil Engineers, Geological Society of London, Royal Institution of Chartered Surveyors, Institution of Environmental Management) and also have relevant experience of investigating contaminated sites.

Reason: To ensure that information provided for the assessment of the risks from land contamination to the future users of the land, neighbouring land, controlled waters, property and ecological systems is sufficient to enable a proper assessment in accordance with Policy EN13 of the Cardiff Local Development Plan.

14. Prior to the construction phase of the development a detailed remediation scheme and verification plan to bring the site to a condition suitable for the intended use by removing any unacceptable risks to human health, controlled waters, buildings, other property and the natural and historical environment shall be submitted to and approved in writing by the Local Planning Authority. The scheme shall include all works to be undertaken, proposed remediation objectives and remediation criteria, a timetable of works and site management procedures. The scheme must ensure that the site will not qualify as contaminated land under Part 2A of the Environmental Protection Act 1990 in relation to the intended use of the land after remediation.

All work and submissions carried out for the purposes of this condition must be conducted in accordance with DEFRA and the Environment Agency's 'Model procedures for the Management of Land Contamination, CLR 11' (September 2004) and the WLGA / WG / NRW guidance document ' Land Contamination: A guide for Developers'

(2017), unless the Local Planning Authority agrees to any variation.

Reason: To ensure that any unacceptable risks from land contamination to the future users of the land, neighbouring land, controlled waters, property and ecological systems are minimised, and to ensure that the development can be carried out safely without unacceptable risks to workers, neighbours and other offsite receptors in accordance with Policy EN13 of the Cardiff Local Development Plan.

15. The remediation scheme approved by condition 14 must be fully undertaken in accordance with its terms prior to the occupation of any part of the development unless otherwise agreed in writing by the Local Planning Authority. The Local Planning Authority must be given two weeks written notification of commencement of the remediation scheme works.

Within 6 months of the completion of the measures identified in the approved remediation scheme, a verification report that demonstrates the effectiveness of the remediation carried out must be submitted to and approved in writing by the Local Planning Authority.

All work and submissions carried out for the purposes of this condition must be conducted in accordance with DEFRA and the Environment Agency's 'Model procedures for the Management of Land Contamination, CLR 11' (September 2004) and the WLGA / WG / NRW guidance document 'Land Contamination: A guide for Developers' (2017),, unless the Local Planning Authority agrees to any variation.

Reason : To ensure that any unacceptable risks from land contamination to the future users of the land, neighbouring land, controlled waters, property and ecological systems are minimised, and to ensure that the development can be carried out safely without unacceptable risks to workers, neighbours and other offsite receptors in accordance with Policy EN13 of the Cardiff Local Development Plan.

16. In the event that contamination is found at any time when carrying out the approved development that was not previously identified it must be reported in writing within 2 days to the Local Planning Authority, all associated works must stop, and no further development shall take place unless otherwise agreed in writing until a scheme to deal with the contamination found has been approved. An investigation and risk assessment must be undertaken and where remediation is necessary a remediation scheme and verification plan must be prepared and submitted to and approved in writing by the Local Planning Authority. Following completion of measures identified in the approved remediation scheme a verification report must be submitted to and approved in writing by the Local Planning Authority. The timescale for the above actions shall be agreed with the LPA within 2 weeks of the discovery of any unsuspected contamination.

Reason: To ensure that any unacceptable risks from land contamination to the future users of the land, neighbouring land, controlled waters, property and ecological systems are minimised, and

to ensure that the development can be carried out safely without unacceptable risks to workers, neighbours and other offsite receptors in accordance with Policy EN13 of the Cardiff Local Development Plan.

17. Any topsoil [natural or manufactured], subsoil, or any aggregate (other than virgin quarry stone) or recycled aggregate material to be imported shall be assessed for chemical or other potential contaminants in accordance with a scheme of investigation which shall be submitted to and approved in writing by the Local Planning Authority in advance of its importation. Only material approved by the Local Planning Authority shall be imported. All measures specified in the approved scheme shall be undertaken in accordance with the relevant Code of Practice and Guidance Notes.

Subject to approval of the above, sampling of the material received at the development site to verify that the imported soil is free from contamination shall be undertaken in accordance with a scheme and timescale to be agreed in writing by the LPA.

Reason: To ensure that the safety of future occupiers is not prejudiced in accordance with policy EN13 of the Cardiff Local Development Plan.

18. The upper window(s) on the west elevation shall be non opening below a height of 1.8 metres above internal floor level and glazed with obscure glass and thereafter be so maintained.

Reason : To ensure that the privacy of adjoining occupiers is protected in accordance with Policy KP5 of the Cardiff Local Development Plan.

RECOMMENDATION 2: To protect the amenities of occupiers of other premises in the vicinity attention is drawn to the provisions of Section 60 of the Control of Pollution Act 1974 in relation to the control of noise from demolition and construction activities. Further to this the applicant is advised that no noise audible outside the site boundary adjacent to the curtilage of residential property shall be created by construction activities in respect of the implementation of this consent outside the hours of 0800-1800 hours Mondays to Fridays and 0800 - 1300 hours on Saturdays or at any time on Sunday or public holidays. The applicant is also advised to seek approval for any proposed piling operations.

RECOMMENDATION 3: The contamination assessments and the effects of unstable land are considered on the basis of the best information available to the Planning Authority and are not necessarily exhaustive. The Authority takes due diligence when assessing these impacts, however you are minded that the responsibility for

- (i) determining the extent and effects of such constraints and;
- (ii) ensuring that any imported materials (including, topsoils, subsoils, aggregates and recycled or manufactured aggregates / soils) are chemically suitable for the proposed end use. Under no circumstances should controlled waste be imported. It is an offence under section 33 of the environmental Protection Act 1990 to deposit controlled waste on

a site which does not benefit from an appropriate waste management license. The following must not be imported to a development site:

- Unprocessed / unsorted demolition wastes.
- Any materials originating from a site confirmed as being contaminated or potentially contaminated by chemical or radioactive substances.
- Japanese Knotweed stems, leaves and rhizome infested soils. In addition to section 33 above, it is also an offence under the Wildlife and Countryside Act 1981 to spread this invasive weed; and

(iii) the safe development and secure occupancy of the site rests with the developer.

Proposals for areas of possible land instability should take due account of the physical and chemical constraints and may include action on land reclamation or other remedial action to enable beneficial use of unstable land.

The Local Planning Authority has determined the application on the basis of the information available to it, but this does not mean that the land can be considered free from contamination.

RECOMMENDATION 4: Prior to the commencement of development, the developer shall notify the Local Planning Authority of the commencement of development, and shall display a site notice and plan on, or near the site, in accordance with the requirements of Article 12 of the Town & Country Planning (Development Management Procedure) (Wales) (Amendment) Order 2016.

RECOMMENDATION 5: That the Applicant is advised that incoming residents will not be eligible to receive resident parking permits.

1. **DESCRIPTION OF PROPOSED DEVELOPMENT**

1.1 Full planning permission is sought for 22 affordable flats with associated bin/cycle storage.

1.2 The flats are configured as follows:

Ground floor

communal flat type 'a' 1bedroom x 4 no
disabled flat type 'b' 1bedroom x 2 no
disabled flat type 'c' 2bedroom x 1 no
walk up flat type 'e' 1bedroom x 1 no

first floor

communal flat type 'a' 1bedroom x 4 no
communal flat type 'd' 2bedroom x 3 no
walk up flat type 'e' 1bedroom x 1 no

second floor

communal flat type 'a' 1bedroom x 3 no

communal flat type 'd' 2bedroom x 3 no

- 1.3 The design of the block is a loose 'L' shape with the height primarily being 3 storeys (13 metres) under a flat roof, bar the corner of Metal Sun Street where the height is reduced to 2 storeys (9 metres). The proposed footprint would be 34 metres along Sun Street x 27 metres along the western elevation (facing Adamsdown Primary School). This western elevation is constructed into three interlinked blocks that stagger back from the boundary with the Adamsdown School. Two of the blocks would have a height of 13 metres with the block closest to the southern boundary being 9 metres.

The materials of the block differ on ground floor (artificial stone) with the upper floors being rendered.

There is a proposed additional separate block that would be sited fronting Metal Street with a foot print of 7 metres x 9 metres with a height of 9 metres. This block would be sited 7.5 metres back from the Metal Street; this set back from the road is due to easement for the electric sub-station.

To create a residential character the proposal creates small front terrace gardens with entrances along Sun/ Metal Street. Access to the rear amenity area would be via a pedestrian foot path sited on Metal Street.

The proposal will not provide any off street parking provision but accessible refuse and cycle provision is proposed on the ground floor that would be sited in close proximity to the pedestrian entrance onto Metal Street

The amenity space to serve the units is accessible to all and is south westerly facing and would be finished in astroturf.

- 1.4 Amendments have been submitted which sought to address the impact upon neighbouring properties by reducing the height of the block from 3 to 2 storey on the corner of Metal/Sun Street and by repositioning a block from the rear to the western side to create a useable amenity area. Internal reconfigurations have also been made that ensures that an acceptable amenity/outlook for the future occupiers.

2. DESCRIPTION OF SITE

- 2.1 The site rectangle in shape measuring an area of 1100m². The site is currently vacant (the former hotel was demolished circa 2010) and overgrown but is enclosed by a 2.5 metre high wooden hording that has been finished by art work from Adamsdown Primary school.
- 2.2 Abutting the western and southern boundaries of the site is the Adamsdown Primary School and associated playground. To the east and opposite the application site are sited a row of 2 storey terrace houses with their frontage facing the site. To the north is the grade II listed vicarage (the vicarage is

listed according to CADW as a good unaltered example of clergy house by this important architect. Group value with church and former school).

- 2.3 The Site is not located within a conservation area/flood risk zone. No protected trees are affected by this proposal

3. **SITE HISTORY**

- 3.1 13/00013/DCI – (Outline) Residential development of 11 x 1 bedroom flats, 3 x no 2 bedroom flats - resolved to be approved subject to the signing of the S106;
- 3.2 09/00468/C- community Centre and 5 flats – resolved to be approved subject to the signing of the S106 agreement;
- 3.3 05-02744/C – Demolition of former hotel & provision of residential accommodation - resolved to be approved subject to the signing of a S106 agreement;

4. **POLICY FRAMEWORK**

- 4.1 Planning Policy Wales, Edition 10 (November 2016).

- 4.2 Technical Advice Notes (TANs):

2	Planning and Affordable Housing
5	Nature Conservation and Planning
11	Noise
12	Design
16	Sport, Recreation and Open Space
18	Transport
21	Waste

- 4.3 Local Development Plan (January 2016):

KP1	Level of Growth
KP5	Good Quality and Sustainable Design
KP7	Planning Obligations
KP8	Sustainable Transport
KP12	Waste
KP13	Responding to Evidenced Social Needs
KP14	Healthy Living
KP15	Climate Change
KP16	Green Infrastructure
KP18	Natural Resources
H3	Affordable Housing
EN8	Trees, Woodlands and Hedgerows
EN9	Conservation of the Historic Environment
EN10	Water Sensitive Design
EN12	Renewable Energy and Low Carbon Technologies

EN13	Air, Noise, Light Pollution and Land Contamination
T1	Walking and Cycling
T2	Strategic Rapid Transit and Bus Corridor Enhancement
T5	Managing Transport Impacts
T6	Impact on Transport Networks and Services
C3	Community Safety/Creating Safe Environments
C5	Provision for Open Space, Outdoor Recreation, Children's Play and Sport
C6	Health
W2	Provision for Waste Management Facilities in Development

4.4 Supplementary Planning Guidance:

Waste Collection and Storage Facilities (October 2016)
 Planning Obligations (January 2017)
 Tall Buildings (January 2017)
 Residential Design Guide (January 2017)
 Location Waste Management Facilities (January 2017)

5. **INTERNAL CONSULTEES RESPONSES**

- 5.1 The Operational Manager, Transportation: In this instance no off-street parking appears to be part of the application. Metal Street has managed on-street parking and is within a residential parking permit area.

The Council's Managing Transport Impacts (inc Parking Standards) SPG (July 2018) applies a maximum vehicle parking standard. Therefore the provision of no off-street parking in this location is acceptable.

The documentation indicates that cycle storage will be provided. The proposals appear to show one location for secure covered cycle parking.

The SPG requires the property to provide secure covered cycle parking for each bedroom in each unit. There is a minimum requirement to provide at least 1 secure covered cycle parking space per bedroom, in this instance a minimum of 24 cycle parking spaces have been provided and is policy compliant.

It is important to note that each flat must be able to access a cycle independently. In this instance each cycle must be capable of being accessed by residents of each flat. Evidence illustrating the appropriateness and adequacy of the proposed cycle parking facility needs to be included as part of the application.

I understand the objector's concern, however, as per Council guidance :

Resident Parking Permits – In accordance with Council Parking Policy, the applicant is advised that incoming residents will not be eligible to receive resident parking permits (see Parking and Transportation, Operational Policies and Standards 2016, 1.1 & 17).

Therefore an objection on parking grounds would be unsustainable.

- 5.2 The Operational Manager, Environment (Contaminated Land): no objection subject contamination conditions.
- 5.3 The Council's Tree Officer: Having reviewed the existing street trees on Sun Street, I do not consider that the proposed development will result in unacceptable harm to them, since they are young cherries with limited growth potential in a wholly hard-landscaped environment. However, they could be damaged by the movement of construction vehicles and materials, and in this context, it may be expedient to protect them with ply boards fixed to a wooden framework. In terms of the development itself I have no objections subject to landscaping conditions being imposed.
- 5.4 The Operational Manager, Waste Management, The refuse storage area, shown in the site plans, has been noted and is acceptable for the storage of the recommended bins, however a designated area for the storage of bulky waste is now a compulsory element of all communal bin stores.
- 5.5 The County Ecologist: No objections.
- 5.6 The Operational Manager, Environment (Noise & Air).
 - 5.6.1 Noise
No objection.
 - 5.6.2 Air
A dust assessment for construction activity should be submitted to and approved by the council before works start on site.
- 5.7 The Council's Access Officer: Any comment will be reported to committee.
- 5.8 The Operational Manager, Drainage : Any comment will be reported to committee.
- 5.9 The Operational Manager, Parks and Sport: no objection subject to a financial contribution in lieu of onsite provision.

6. **EXTERNAL CONSULTEES RESPONSES**

- 6.1 Dwr Cymru Welsh Water: We have reviewed the information submitted as part of this application and note that the intention is to drain both foul and surface water to the mains sewer for which we can only comment on the acceptability of the foul water proposal at this stage, albeit that we would specify that a connection is made to the 225mm public sewer in Sun Street. We would not consider any new connection to the sewer in Metal Street. In the absence of a surface water strategy in which an assessment is undertaken to explore the potential to dispose of surface water by sustainable means, we cannot support the application in full.

6.2 The South Wales Police Crime Prevention Design Advisor: No objections.

6.5 The South Wales Fire and Rescue Service~: No objections.

7. **REPRESENTATIONS**

7.1 Neighbouring properties have been notified and additional publicity has been undertaken by a site/press notice in accordance with procedure. 67 letters of objection have been received. A summary of the objections are as follows:

- (i) The proposal is an overdevelopment of the site;
- (ii) the proposal would have a negative effect upon the listed buildings of St. Germans Church (Grade 1), Clergy house (Grade 2) and St. Germans Court (Grade 2);
- (iii) the size and scale of the design makes no attempt to mimic the late Victorian architecture of the 3 storey town houses on Metal Street the flat roof is out of character with the pitched slate roofs within the area;
- (iv) the proposal does not promote mixed communities being on one bedroom flats which will result in a transient population that will not have invested in the local community;
- (v) poor conditions for the future occupiers though only having north facing windows and lack of access to green space which will result in a negative impact upon the wellbeing of future occupiers;
- (vi) the design does not proposes any renewable energy provision,
- (vii) concern over the lack of parking provision given that Metal Street is an important link road to Newport Rd since Clifton Street became one way. Given that the site will have, as a minimum, deliveries and trades people it is unrealistic to suggest that the proposal would not have a negative impact upon parking within the area;
- (viii) housing within the Adamsdown ward, both to rent and buy, is below the average for Cardiff and in addition, within this ward, there has been already 3,000 dwelling provide (7% of the expected demand required from the LDP) it is considered that Adamsdown has done its bit to promote the growing population of Cardiff.

In addition to the above the adjoining Adamsdown Primary School has objected on the additional following grounds:

Concern over future occupiers being able to see the children playing.

7.2 Local Members have been notified. Both Councillor Howells and Jones object to the application on the following grounds:

- (i) the proposal does not promote mixed communities being on one bedroom flats which will result in a transient population that will not have invested in the local community;
- (ii) poor conditions for the future occupiers though only having north facing windows and lack of access to green space which will result in a negative impact upon the wellbeing of future occupiers;
- (ii) The design does not proposes any renewable energy provision;

- (iv) concern over the lack of parking provision given that Metal Street is an important link road to Newport Rd since Clifton Street became one way. Given that the site will have, as a minimum, deliveries and trades people it is unrealistic to suggest that the proposal would not have a negative impact upon parking within the area;
- (v) Housing within the Adamsdown ward, both to rent and buy, is below the average for Cardiff and in addition, within this ward, there has been already 3,000 dwelling provide (7% of the expected demand required from the LDP) it is considered that Adamsdown has done its bit to promote the growing population of Cardiff.

In addition both have requested that the application is determined by the Planning Committee and have requested that the Committee visit the site.

7.3 A petition of 80 signatures has been submitted in objection. The indicated grounds for objection are:

The site is unsuitable for such a large collection of dwellings, will put strain on local resources and the current proposal is out of keeping with the local area.

8. **ANALYSIS**

8.1 The application was presented to the 15th May Planning Committee, where it was deferred for a site visit. The site visit was undertaken on the 10th June, 2019.

8.2 The planning considerations in this case are considered to be

- I) The principle of development;
- II) The impact upon the character of the area;
- III) The impact upon neighbouring properties
- IV) The impact upon the future occupiers
- V) The impact upon parking and highway provision
- VI) The impact upon Listed Buildings
- VII) Other matters raised
- VIII) Planning obligations

8.3 **The principle of development**

The application site falls within the settlement boundary and has no specific allocation or designation. The context and character of the surrounding area is residential.

Policy H6: Change of Use or Redevelopment to Residential Use provides the relevant policy framework against which the application should be assessed. Policy H6 permits the change of use of redundant premises or redevelopment of redundant previously developed land for residential use where:-

- i. There is no overriding need to retain the existing use of the land or premises and no overriding alternative local land use requirement;

- ii. The resulting residential accommodation and amenity will be satisfactory;
- iii. There will be no unacceptable impact on the operating conditions of existing businesses;
- iv. Necessary community and transportation facilities are accessible or can be readily provided or improved; and
- v. It can be demonstrated that the change of use to a more sensitive end use has been assessed in terms of land contamination risk and that there are no unacceptable risks to the end users.

Assessed against the above policy framework, the application site is located in an established residential area, in a highly accessible and sustainable location. Clifton Street District Centre which offers a substantial range of local services and facilities is located within 130m and Cardiff City Centre and Queen Street Station approximately within 1km. In addition the nearest bus stop is located within 150m and provides regular services to the city centre and surrounding area. As such the site's location will encourage use of sustainable transport modes, being located within convenient walking and/or cycling distance of a range of local services and facilities.

In light of the above, the application raises no land use policy concerns.

It is also noted that a previous consent (13/00013/DCI) for residential development of 14 flats on this site has been approved, therefore, higher density development has, in principle, been established.

8.4 The impact upon the character of the area

The area is based upon a grid pattern layout, as is typical for an inner city area with Cardiff, with a built form that can be characterised as a mixture of styles, i.e. the regular rhythm and form of the terrace, the style and vernacular associated with the listed vicarage and church, and the functional form of the single storey primary school. The proposal is a modern design with a flat roof the set back and front gardens with railing creates a domestic character that respects the predominant uses within the area.

The bays project forward of the walls and would be finished in differing materials to walls this is to ensure that the mass of the building does not create 'block' feel. The use of materials and their application is important in ensuring that the scheme harmonises with the local area and a condition is recommended to ensure this design quality is met. The proposal of Ivory coloured render, stone cladding on the ground floor, with aluminium grey cladding for the bays is considered to meet this expectation.

The concern over scale and height is noted, however, the site is a corner plot that is separated by roads from the terrace housing and the vicarage combined with the fact that the flat roof would be no higher than the vicarage (three storey element) and the eaves of the terrace for the two storey element therefore the site is considered able to accommodate the proposal . Visually, three storey buildings can be seen at Anderson Place and the Saint German

Church is taller than the surrounding buildings. In this case the height of the proposal would not be seen as an incongruous feature within the street scene.

Taken the above into account it is considered that the proposal accords with Planning Policy Wales (PPW) and Council's design policy which seeks good design to respond positively to the character of an area.

8.5 The impact upon neighbouring properties

PPW and the Council's design policy and guidance seeks to ensure that development does not harm the amenity of existing residential occupiers. This harm can be in either the form, scale and massing being overbearing and un-neighbourly, or in the loss of light or privacy. The Council's Infill sites SPG requires the loss of light from a development to be assessed by the 25 degree methodology. The amended plans ensure that the siting and design would not breach this standard for adjoining residential properties and therefore it is considered that in terms of loss of ambient light the proposal accords with policy.

The site is separated from the adjoining residential properties by the existing road (separation distance of approximately 12.8 metres from the vicarage sited to the north and 12.97 metres from terraced properties to the east), this separation ensures that the 3/2 storey blocks being no higher than the ridge of the adjoining properties, would not result in an overbearing form of development on the existing residential properties.

8.6 Privacy

There would be habitable windows that would overlook existing residential properties at a distance of approximately 12 metres. Whilst the 'Infill Sites' SPG (para 4.9) suggests a minimum of 21 metres (for private areas i.e rear gardens), this guidance must be read in the context of the application site. In this case, the site is located within a tight urban environment where separation distances between frontages of circa 12 metres is not uncommon. For the above reasons, and on balance, the proposal is considered acceptable having regard to privacy standards set within policy and guidance.

8.7 Adamsdown Primary School

The Council's design policies relate to the protection of residential amenity rather to that of non-residential. Whilst acknowledging that the building would create a differing feel to that of the scrub land currently on site it is considered that the proposal would not inhibit the ability of the school to teach children or result in an over development, bearing in mind that the site once housed a hotel. The concern over privacy of the children is noted, but it is considered that the windows in the west elevation, which are the windows closest to the school can be obscurely glazed and non-opening below a height 1.8 metres. It must also be noted that the existing boundary wall will remain which will ensure that the ground floor flats and amenity space will be screened from the school. Condition 18 above is recommended to address these concerns.

8.8 The impact upon the future occupiers

PPW and the Council's adopted design policy and guidance requires all new development to provide a positive living environment for future occupiers. The proposal has been amended to ensure that the amenity space to serve the development provides an environment that can be accessed and pleasant for all.

In terms of the internal configuration, the Council has approved a minimum internal standard for flat conversions. Whilst that SPG relates to conversions of properties rather than new build, it is the most up-to-date expression of the Council's view of good design. This proposal meets those standards and is therefore considered policy compliant in terms of floorspace per flat. The positioning of rooms and windows have been altered on the ground floor to ensure that the outlook for the occupiers is acceptable, these changes are considered to be acceptable.

8.9 The impact upon parking and highway provision

The concerns of residents and Ward Councillors over the lack of parking provision is recognised but PPW and the Council's approved parking standards seek to reduce car dependency by locating development in sustainable locations. This site is located close to the city centre and is within approximately 100 metres of the Clifton Street District Centre, and given this context, would meet the criteria of being a sustainable location. As a sustainable location the need for cars is significantly reduced and accords with Policy T5 and the approved parking standards. However, to ensure that on-street parking does not occur, additional yellow lines are proposed along Sun Street.

The site is located in close proximity to the Adamsdown Primary School and the Council's Transportation Officer has considered this context within their consideration and believe that the lack of off street parking provision would not undermine highway safety in this instance.

8.10 The impact upon Listed Buildings

The proposal would be sited approximately 12 metres away from the vicarage and church, which are Listed Buildings. S.66 of the Listed Building and Conservation Areas Act requires Local Planning Authorities to consider the setting of a Listed Building when determining applications. Recent case law clarifies how a Local Planning Authority considers the impact upon the setting of a listed building (i.e this can be wider than just the curtilage). The Council's Conservation Officer has considered the setting and how the Listed Buildings are experienced by the public, and raise no objection to this proposal on heritage grounds.

Other matters raised

- 8.11 The concerns of residents and the adjoining school in relation to anti-social behaviour is noted but no evidence has been produced that would suggest that the future occupiers would cause anti-social behaviour beyond any other forms of housing.
- 8.12 Reference to the area being affordable and the evidence supplied by the objectors is noted. However, the advice of the Council's Housing Strategy Manager states that there are currently 1,584 people on the waiting list within the Adamsdown Ward for 1 & 2 bedroom accommodation, therefore it is considered that there is a demand for this type of housing within the Ward.
- 8.13 The comments regarding renewable energy as raised by the objectors are noted. The proposal is a new build development which would need to accord with Building Regulations. It is not considered that the lack of renewable energy provision would be sufficient reason to sustain a refusal of planning permission in this instance.
- 8.14 The proposal is for one bedroom apartments and as such the on-site amenity space is considered appropriate for the scale of development. The finish of the amenity surface as astroturf is considered acceptable. In terms of visual amenity, the creation of green frontages is considered to be a positive statement.

9. SECTION 106 AGREEMENT

- 9.1 Requests for the following financial contributions have been received:

Public open space (POS) **£35,692**

Consultation will take place with Ward Members to agree use of the contribution, and this will be confirmed at S106 stage. The closest areas of recreational open space are Anderson Fields, System Street Open Space, Brewery Park and Cemetery Park.

Highway improvements (including traffic orders) **£5,000** for junction protection on Sun Street/Metal Street and Lead Street/Metal Street.

Limiting the development to affordable housing as defined in TAN 2.

Having regard to the legal tests as set in Regulation 122 (Community Infrastructure Levy Regulations 2010), and policy advice set in Welsh Office Circular 13/97, the above financial requirements and limitation on tenure of the units are considered to meet those tests.

10. CONCLUSIONS

- 10.1 The proposal would utilise a brownfield site for affordable housing within an area of high housing need. Whilst it is acknowledged that the scheme is a 3/2 storey flat roof modern design and is at a higher density than the surrounding

properties, having regard to material matters raised and for the reasons outlined in this report, it is considered that the proposal would, on balance, accord with the Council's policies and national policies for sustainable development. The application is recommended for approval subject to conditions and the completion of a Legal Agreement.

11. **OTHER LEGAL CONSIDERATIONS**

- 11.1 *Crime and Disorder Act 1998* – Section 17(1) of the Crime and Disorder Act 1998 imposes a duty on the Local Authority to exercise its various functions with due regard to the likely effect of the exercise of those functions on, and the need to do all that it reasonably can to prevent, crime and disorder in its area. This duty has been considered in the evaluation of this application. It is considered that there would be no significant or unacceptable increase in crime and disorder as a result of the proposed decision.
- 11.2 *Equality Act 2010* – The Equality Act 2010 identifies a number of 'protected characteristics', namely age; disability; gender reassignment; pregnancy and maternity; race; religion or belief; sex; sexual orientation; marriage and civil partnership. The Council's duty under the above Act has been given due consideration in the determination of this application. It is considered that the proposed development does not have any significant implications for, or effect on, persons who share a protected characteristic.
- 11.3 *Well-Being of Future Generations Act 2016*
In reaching this decision, the Council have taken into account the requirements of sections 3 and 5 of the Well Being of Future Generations (Wales) Act 2015. It considers that this decision is in accordance with the Act's sustainable development principle through its contribution towards the Planning Policy Wales (Ed.10) well-being objective of supporting safe, cohesive and resilient communities.
- 11.4 *Environment Act 2016*
Section 6- of this Act imposes a duty on public bodies to maintain and enhance biodiversity and in so doing promote the resilience of ecosystems, so far as consistent with the proper exercise of those functions.

Notes
This drawing is copyright.
All dimensions are to be checked prior to construction or manufacture.
Any discrepancies to be reported immediately to the Architect.

davies llewelyn and jones

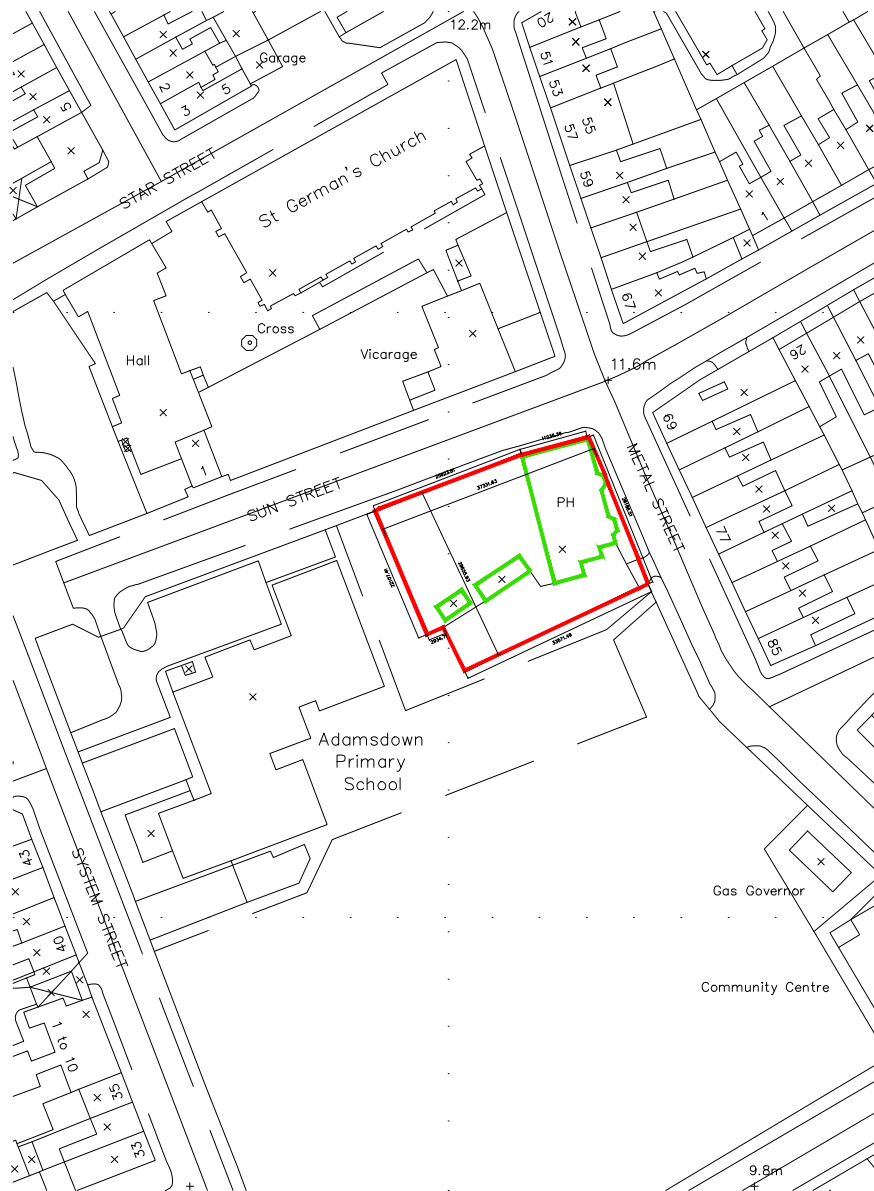
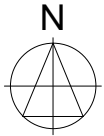
Chartered Architects
The Mallings, East Tyndall Street, Cardiff Bay, Cardiff CF1 5EA,
Tel: (029) 20464433 Fax: (029) 20464345

Sheet SITE LOCATION PLAN Sheet No/Revision (90)001

Client HAFOD RESOURCES LTD

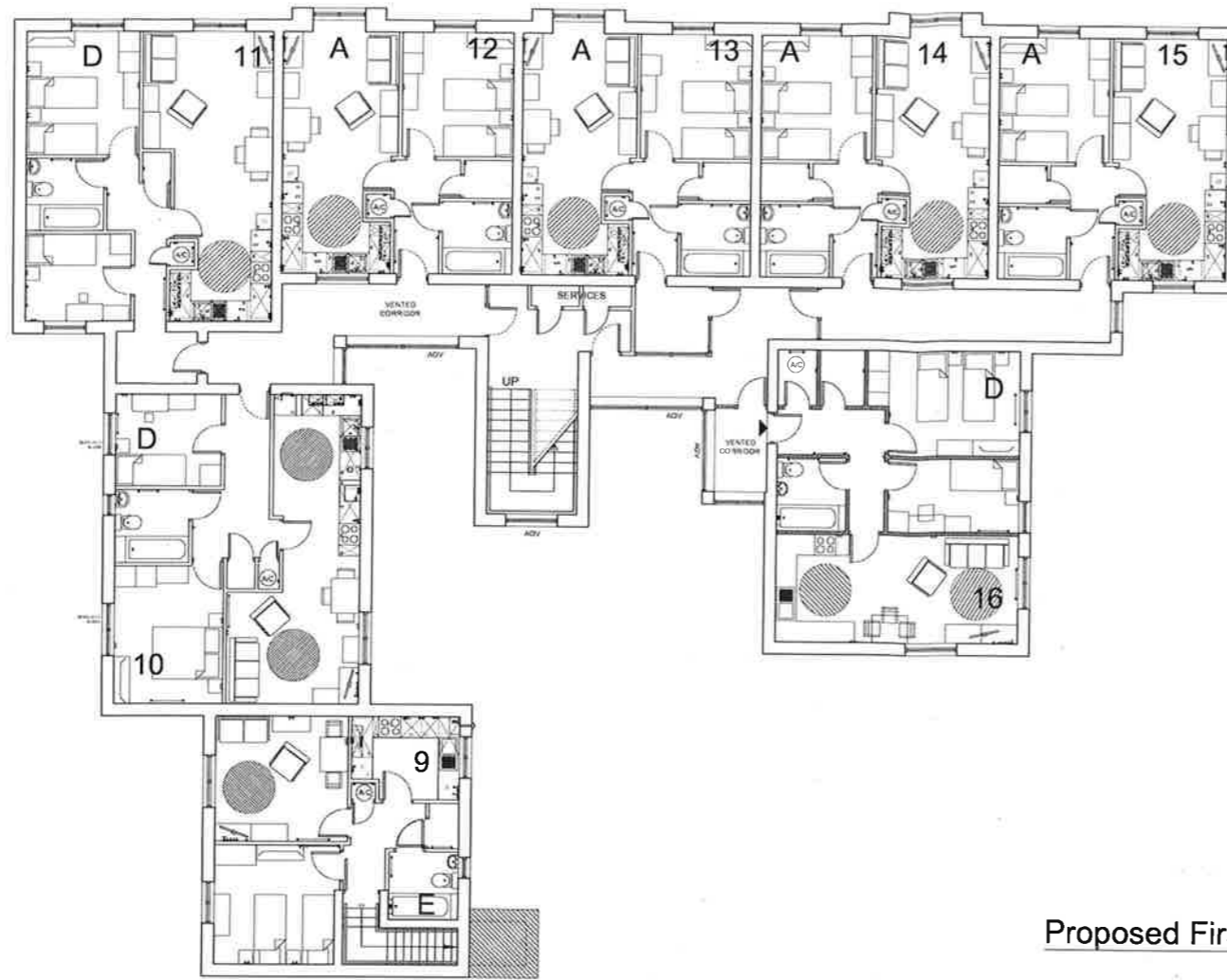
Date DEC 2005 Scale 1:1250 Drawn/Checked WLJ

Job FORMER EASTERN HOTEL
54 METAL STREET, ADAMSDOWN, CARDIFF

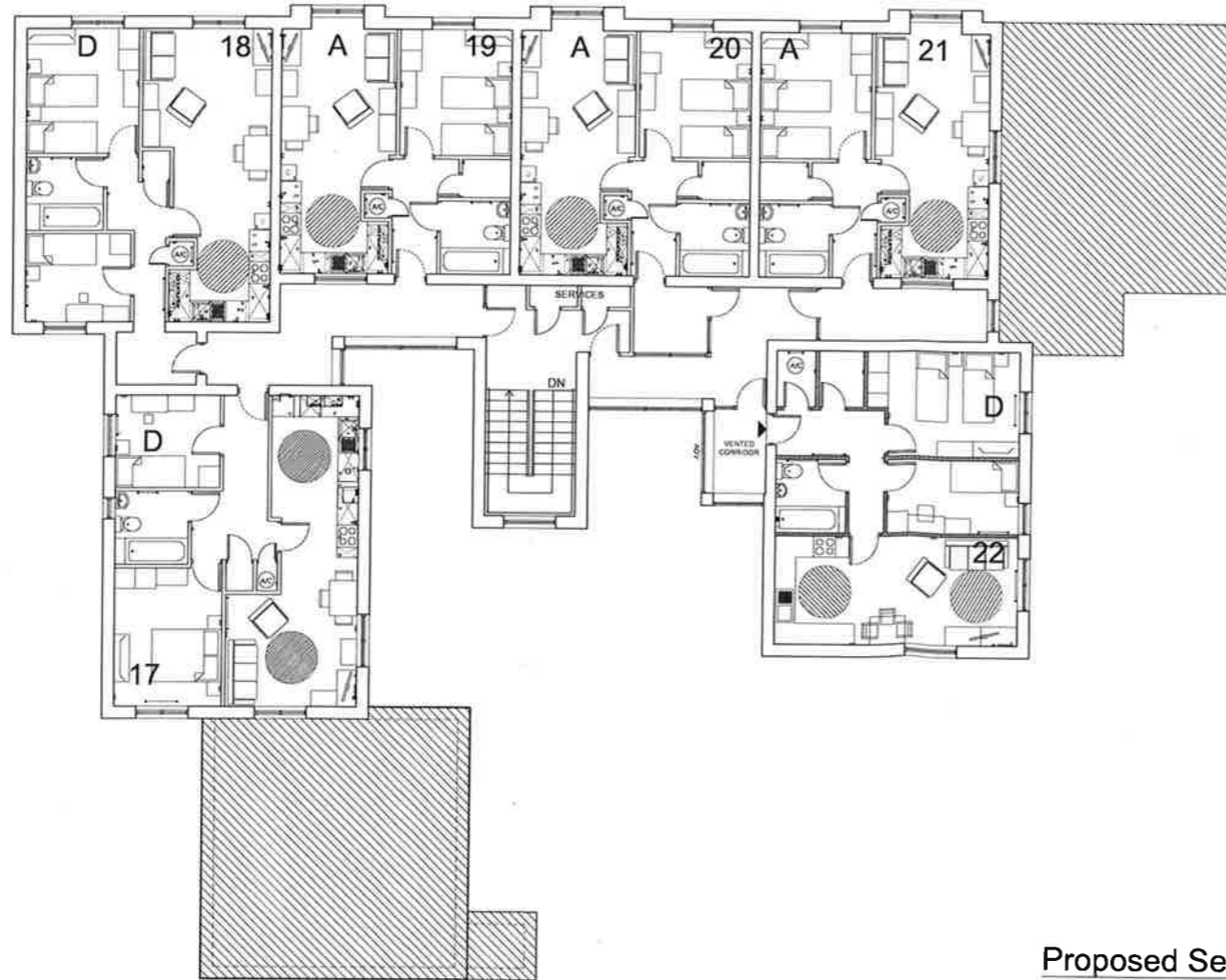


Crown Copyright. All rights reserved. Licence Number 100020449





Proposed First Floor Plan



Proposed Second Floor Plan

notes

THIS DRAWING SHALL BE READ IN CONJUNCTION WITH THE FOLLOWING ARCHITECTS DRAWINGS:

- (9)001 SITE LOCATION PLAN
- (SK)001 PROPOSED SITE LAYOUT
- (SK)002 PROPOSED FLOOR PLANS
- (SK)003 PROPOSED ELEVATIONS
- (SK)004 PROPOSED ELEVATIONS
- (SK)005 PROPOSED CROSS SECTIONS
- (SK)006 PROPOSED FLAT TYPES - GROUND FLOOR
- (SK)007 PROPOSED FLAT TYPES - 1ST + 2ND FLOOR
- (SK)008 PROPOSED BLOCK PLAN
- (74)101 PROPOSED KITCHEN LAYOUTS
- (74)102 PROPOSED KITCHEN LAYOUTS
- (74)103 PROPOSED KITCHEN LAYOUTS
- (74)104 PROPOSED KITCHEN LAYOUTS

SCHEDULE OF ACCOMMODATION

FLOOR	FLAT TYPE	NO.	TOTAL
GROUND FLOOR	COMMUNAL FLAT TYPE 'A'	2P1B	4 No
	DISABLED FLAT TYPE 'B'	2P1B	2 No
	DISABLED FLAT TYPE 'C'	3P2B	1 No
	WALK UP FLAT TYPE 'E'	2P1B	1 No
FIRST FLOOR	COMMUNAL FLAT TYPE 'A'	2P1B	4 No
	COMMUNAL FLAT TYPE 'D'	3P2B	3 No
	WALK UP FLAT TYPE 'E'	2P1B	1 No
SECOND FLOOR	COMMUNAL FLAT TYPE 'A'	2P1B	3 No
	COMMUNAL FLAT TYPE 'D'	3P2B	3 No
TOTAL No. OF FLATS			22 No.

Rev	Date	Description
1	03.03.2018	PROPOSED SITE LAYOUT AND EXISTING SERVICES. CAR PARKING SPACES OMITTED.
2	06.07.2017	PROPOSED SITE LAYOUT AND EXISTING SERVICES. CAR PARKING SPACES OMITTED.
3	06.07.2017	PROPOSED SITE LAYOUT AND EXISTING SERVICES. CAR PARKING SPACES OMITTED.
4	06.07.2017	PROPOSED SITE LAYOUT AND EXISTING SERVICES. CAR PARKING SPACES OMITTED.
5	06.07.2017	PROPOSED SITE LAYOUT AND EXISTING SERVICES. CAR PARKING SPACES OMITTED.
6	06.07.2017	PROPOSED SITE LAYOUT AND EXISTING SERVICES. CAR PARKING SPACES OMITTED.
7	06.07.2017	PROPOSED SITE LAYOUT AND EXISTING SERVICES. CAR PARKING SPACES OMITTED.
8	06.07.2017	PROPOSED SITE LAYOUT AND EXISTING SERVICES. CAR PARKING SPACES OMITTED.
9	06.07.2017	PROPOSED SITE LAYOUT AND EXISTING SERVICES. CAR PARKING SPACES OMITTED.
10	06.07.2017	PROPOSED SITE LAYOUT AND EXISTING SERVICES. CAR PARKING SPACES OMITTED.
11	06.07.2017	PROPOSED SITE LAYOUT AND EXISTING SERVICES. CAR PARKING SPACES OMITTED.
12	06.07.2017	PROPOSED SITE LAYOUT AND EXISTING SERVICES. CAR PARKING SPACES OMITTED.
13	06.07.2017	PROPOSED SITE LAYOUT AND EXISTING SERVICES. CAR PARKING SPACES OMITTED.
14	06.07.2017	PROPOSED SITE LAYOUT AND EXISTING SERVICES. CAR PARKING SPACES OMITTED.
15	06.07.2017	PROPOSED SITE LAYOUT AND EXISTING SERVICES. CAR PARKING SPACES OMITTED.
16	06.07.2017	PROPOSED SITE LAYOUT AND EXISTING SERVICES. CAR PARKING SPACES OMITTED.
17	06.07.2017	PROPOSED SITE LAYOUT AND EXISTING SERVICES. CAR PARKING SPACES OMITTED.
18	06.07.2017	PROPOSED SITE LAYOUT AND EXISTING SERVICES. CAR PARKING SPACES OMITTED.
19	06.07.2017	PROPOSED SITE LAYOUT AND EXISTING SERVICES. CAR PARKING SPACES OMITTED.
20	06.07.2017	PROPOSED SITE LAYOUT AND EXISTING SERVICES. CAR PARKING SPACES OMITTED.
21	06.07.2017	PROPOSED SITE LAYOUT AND EXISTING SERVICES. CAR PARKING SPACES OMITTED.
22	06.07.2017	PROPOSED SITE LAYOUT AND EXISTING SERVICES. CAR PARKING SPACES OMITTED.

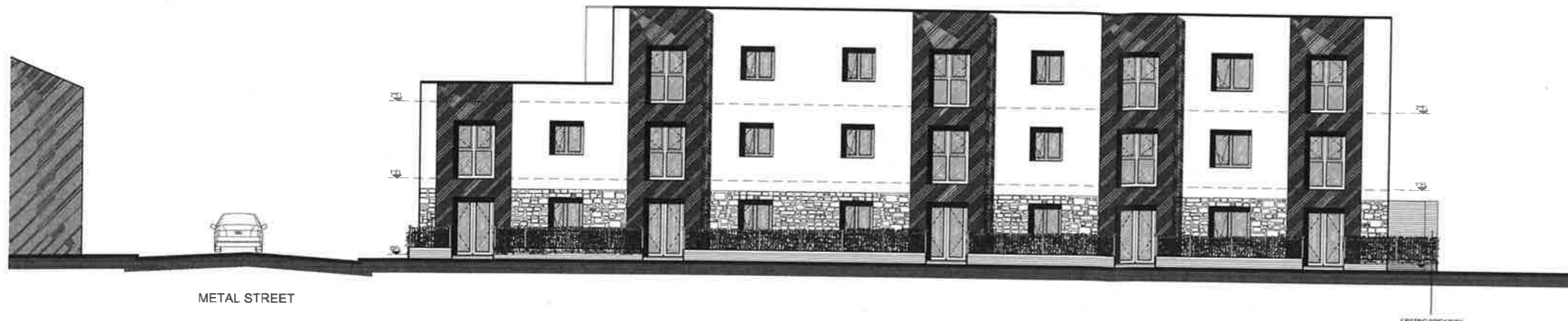
Sheet	Date	Scale	Job No	Drawn/Checked
PROPOSED FLOOR PLANS - FIRST & SECOND	MAR 2019	1:100	1105/28	AV/DD

Client: HAFOD HOUSING ASSOCIATION
 Job: PROPOSED RESIDENTIAL DEVELOPMENT AT 54 METAL STREET, ADAMSDOWN

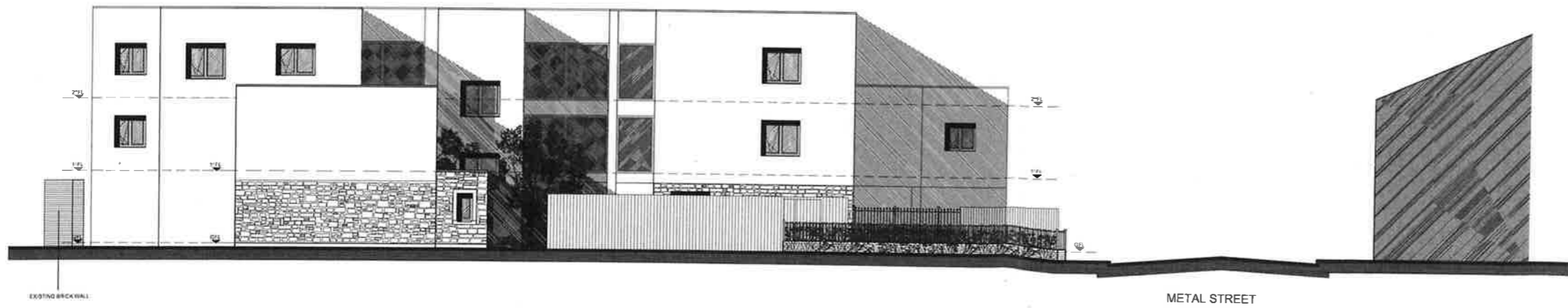
davies jewelyn and jones
 Chartered Architects
 The Millers, East Ford Street, Cardiff CF10 1SA, Tel: (01222) 44423 Fax: (01222) 44415

Specification
 This drawing must be read in conjunction with 'Design Specification Note Bill of Materials'.
 This drawing must be read in conjunction with all other Architects' drawings and specialist's drawings and specifications.

Notes
 All dimensions are in millimetres.
 All dimensions are to be taken to the centre of the line unless otherwise stated.
 Any dimensions to be taken to the face of the line unless otherwise stated.
 The drawing shall be read in conjunction with the following architects drawings:



Front (north) elevation (Sun Street)



Rear (south) elevation

Proposed Elevations

notes

THIS DRAWING SHALL BE READ IN CONJUNCTION WITH THE FOLLOWING ARCHITECTS DRAWINGS:

- (R0)001 SITE LOCATION PLAN
- (SK)001 PROPOSED SITE LAYOUT
- (SK)002 PROPOSED FLOOR PLANS
- (SK)003 PROPOSED ELEVATIONS
- (SK)004 PROPOSED ELEVATIONS
- (SK)005 PROPOSED CROSS SECTIONS
- (SK)006 PROPOSED FLAT TYPES - GROUND FLOOR
- (SK)007 PROPOSED FLAT TYPES - 1ST + 2ND FLOOR
- (SK)008 PROPOSED BLOCK PLAN
- (74)101 PROPOSED KITCHEN LAYOUTS
- (74)102 PROPOSED KITCHEN LAYOUTS
- (74)103 PROPOSED KITCHEN LAYOUTS
- (74)104 PROPOSED KITCHEN LAYOUTS

SCHEDULE OF ACCOMMODATION

FLOOR	FLAT TYPE	NO.	TOTAL
GROUND FLOOR	COMMUNAL FLAT TYPE 'A'	2P1B	4 No
	DISABLED FLAT TYPE 'B'	2P1B	2 No
	DISABLED FLAT TYPE 'C'	3P2B	1 No
	WALK UP FLAT TYPE 'E'	2P1B	1 No
FIRST FLOOR	COMMUNAL FLAT TYPE 'A'	2P1B	4 No
	COMMUNAL FLAT TYPE 'D'	3P2B	3 No
	WALK UP FLAT TYPE 'E'	2P1B	1 No
SECOND FLOOR	COMMUNAL FLAT TYPE 'A'	2P1B	4 No
	COMMUNAL FLAT TYPE 'D'	3P2B	3 No
TOTAL No. OF FLATS			23 No

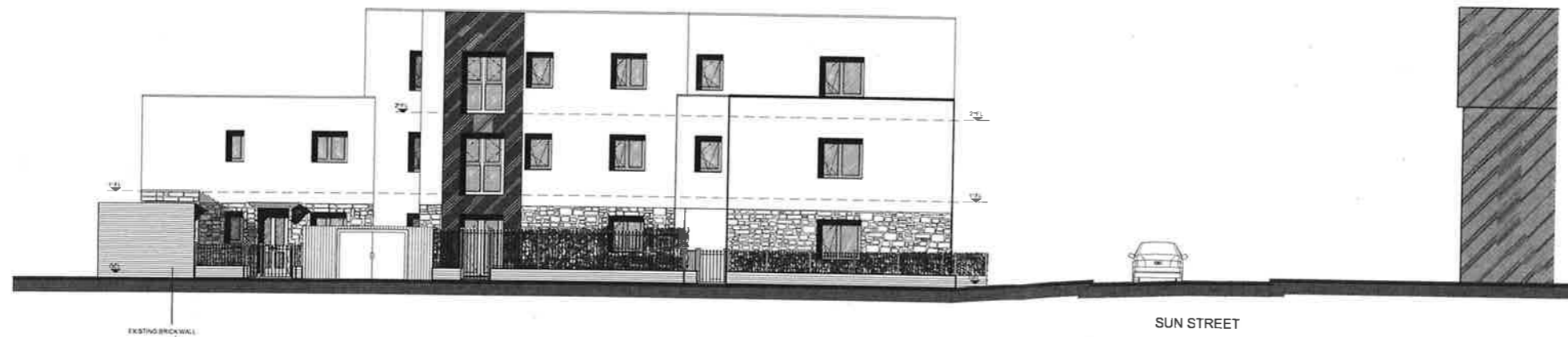
SCHEDULE OF MATERIALS

- WALLS
- RENDER: THROUGH COLOURED RENDER
- COLOUR: IVORY
- STONE CLADDING: ROCKPANEL STONES OR SIMILAR
- COLOUR: MINERAL CHALK
- CLADDING: ROCKPANEL METALLICS BOARD OR SIMILAR
- COLOUR: ALUMINIUM GREY
- WINDOWS
- DARK GREY PVC-U

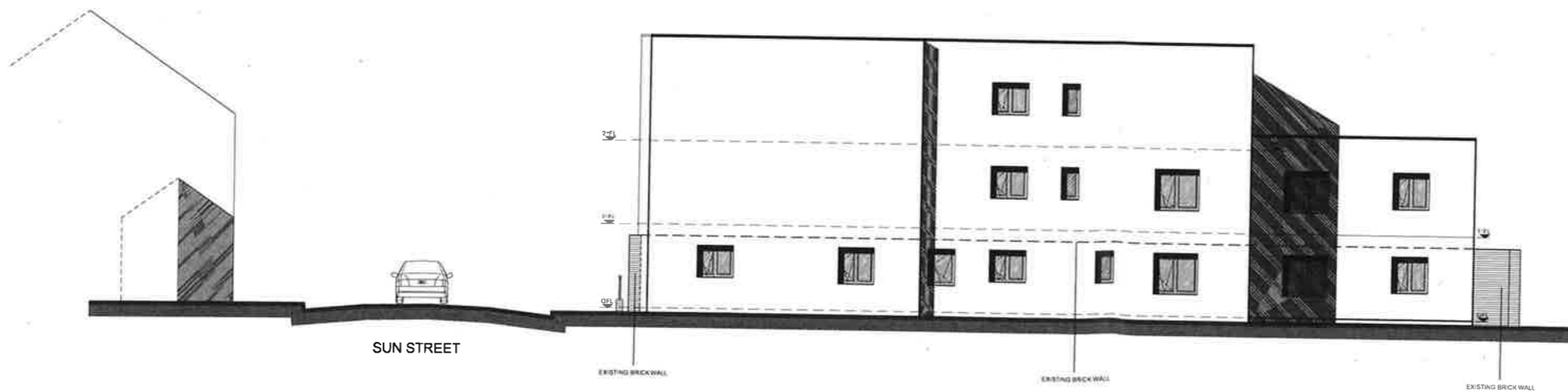
Rev	Date	Description
C	02.02.2018	PROPOSED ELEVATIONS AMENDED TO MATCH THE PLANS
D	14.03.2018	PROPOSED SITE LAYOUT AND ELEVATIONS REVISED CAR PARKING SPACES OMITTED
E	10.07.2018	PROPOSED ELEVATIONS AND MATERIALS AMENDED
F	20.09.2018	PROPOSED SITE LAYOUT AND ELEVATIONS AMENDED
G	11.09.2018	TYPE A FLAT AMENDED TO INCLUDE A/C AND STENCIL
H	22.10.2018	PROPOSED SITE LAYOUT AMENDED TO CORRECT WITH MATERIALS SPECIFICATION
I	14.11.2018	PROPOSED SITE LAYOUT AND ELEVATIONS REVISED
J	29.12.2018	PROPOSED SITE LAYOUT AND ELEVATIONS REVISED
K	04.02.2019	PROPOSED SITE LAYOUT AND ELEVATIONS REVISED
L	11.02.2019	PROPOSED SITE LAYOUT AND ELEVATIONS REVISED
M	13.04.2019	PROPOSED SECOND FLOOR FLAT REVISED
N		PROPOSED SECOND FLOOR FLAT REVISED
P		PER STANDARD A52A REVISED

Sheet No./Revision
(SK)003P
 Date: April 2019
 Scale: 1:100
 Job No:
 Drawn/Checked: AV/DD
 Job: PROPOSED RESIDENTIAL DEVELOPMENT AT 54 METAL STREET, ADAMSDOWN
 Client: HAFOD HOUSING ASSOCIATION
 Chartered Architects
davies lewelyn and jones
 The Millers, East Tyndal Street, Cardiff Bay, Cardiff, CF10 1SA, Tel: (01222) 644430 Fax: (01222) 644445

Notes
 This drawing is copyright.
 All dimensions are to be checked prior to construction or installation.
 All dimensions are to be checked prior to construction or installation.
 The drawing shall be read in conjunction with the Specification and Schedule of Materials.
 Specification
 This drawing shall be read in conjunction with the Specification and Schedule of Materials.
 The drawing shall be read in conjunction with the Specification and Schedule of Materials.
 The drawing shall be read in conjunction with the Specification and Schedule of Materials.



Side (east) elevation (Metal Street)



Side (west) elevation

Proposed Elevations

notes

THIS DRAWING SHALL BE READ IN CONJUNCTION WITH THE FOLLOWING ARCHITECTS DRAWINGS:

- (R0)001 SITE LOCATION PLAN
- (SK)001 PROPOSED SITE LAYOUT
- (SK)002 PROPOSED FLOOR PLANS
- (SK)003 PROPOSED ELEVATIONS
- (SK)004 PROPOSED ELEVATIONS
- (SK)005 PROPOSED CROSS SECTIONS
- (SK)006 PROPOSED FLAT TYPES - GROUND FLOOR
- (SK)007 PROPOSED FLAT TYPES - 1ST + 2ND FLOOR
- (SK)008 PROPOSED BLOCK PLAN
- (74)101 PROPOSED KITCHEN LAYOUTS
- (74)102 PROPOSED KITCHEN LAYOUTS
- (74)103 PROPOSED KITCHEN LAYOUTS
- (74)104 PROPOSED KITCHEN LAYOUTS

SCHEDULE OF ACCOMMODATION

FLOOR	FLAT TYPE	NO.	TOTAL
GROUND FLOOR	COMMUNAL FLAT TYPE 'A'	2P1B	4 No
	DISABLED FLAT TYPE 'B'	2P1B	2 No
	DISABLED FLAT TYPE 'C'	3P2B	1 No
	WALK UP FLAT TYPE 'E'	2P1B	1 No
FIRST FLOOR	COMMUNAL FLAT TYPE 'A'	2P1B	4 No
	COMMUNAL FLAT TYPE 'D'	3P2B	3 No
	WALK UP FLAT TYPE 'E'	2P1B	1 No
SECOND FLOOR	COMMUNAL FLAT TYPE 'A'	2P1B	4 No
	COMMUNAL FLAT TYPE 'D'	3P2B	3 No

TOTAL No. OF FLATS 23 No.

SCHEDULE OF MATERIALS

- WALLS
RENDER: THROUGH COLOURED RENDER
COLOUR: IVORY
- STONE CLADDING: ROCKPANEL STONES OR SIMILAR
COLOUR: MINERAL CHALK
- CLADDING: ROCKPANEL METAL LICS BOARD OR SIMILAR
COLOUR: ALUMINIUM GREY
- WINDOWS
DARK GREY PVC-U.

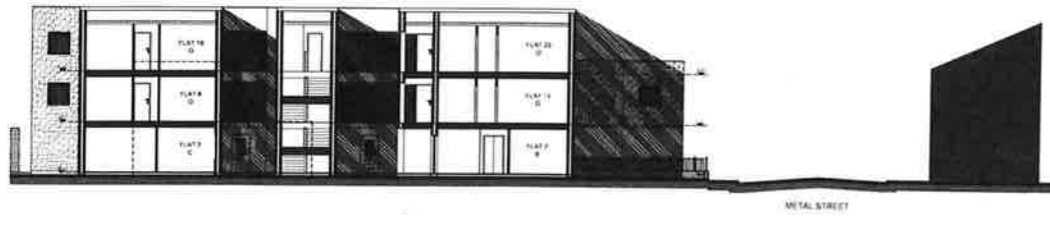
Notes
This drawing is copyright. Any reproduction or use of this drawing without the written permission of the architect is prohibited. The architect is not responsible for any errors or omissions in this drawing. The architect is not responsible for any errors or omissions in this drawing. The architect is not responsible for any errors or omissions in this drawing.

Specification
This drawing is to be read in conjunction with the Specification Sheet 'Bill of Materials' and 'Schedule of Materials'.

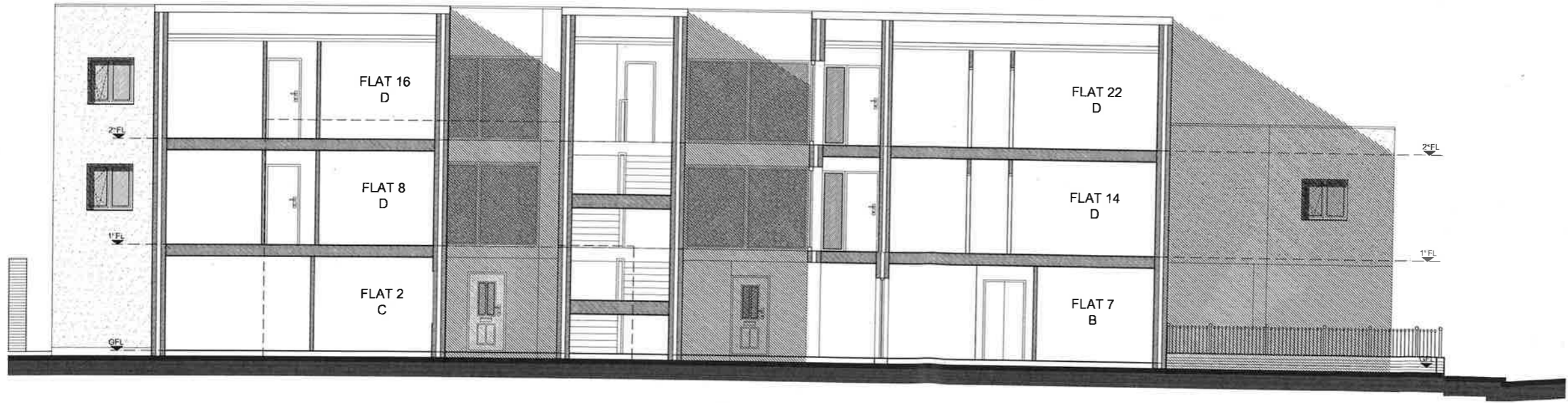
Rev	Date	Description
A	03.02.2018	PROPOSED ELEVATIONS
B	14.02.2018	PROPOSED ELEVATIONS
C	18.07.2018	PROPOSED ELEVATIONS
D	28.08.2018	PROPOSED ELEVATIONS
E	11.09.2018	PROPOSED ELEVATIONS

Sheet	Scale	Job No	Client
PROPOSED ELEVATIONS	1:100	(SK)004M	HAFOOD HOUSING ASSOCIATION
MAR 2019			54 METAL STREET, ADAMSDOWN

davies jlewelyn and jones
Chartered Architects
The Milling, East Tyndal Street, Cardiff CF10 1SA. Tel: (01222) 464438 Fax: (01222) 464343



Proposed cross site section 1:200



Proposed cross site section 1:100

Proposed Cross Section

notes

THIS DRAWING SHALL BE READ IN CONJUNCTION WITH THE FOLLOWING ARCHITECTS DRAWINGS:

- (R)0001 SITE LOCATION PLAN
- (SK)001 PROPOSED SITE LAYOUT
- (SK)002 PROPOSED FLOOR PLANS
- (SK)003 PROPOSED ELEVATIONS
- (SK)004 PROPOSED ELEVATIONS
- (SK)005 PROPOSED CROSS SECTIONS
- (SK)006 PROPOSED FLAT TYPES - GROUND FLOOR
- (SK)007 PROPOSED FLAT TYPES - 1ST + 2ND FLOOR
- (SK)008 PROPOSED BLOCK PLAN
- (74)101 PROPOSED KITCHEN LAYOUTS
- (74)102 PROPOSED KITCHEN LAYOUTS
- (74)103 PROPOSED KITCHEN LAYOUTS
- (74)104 PROPOSED KITCHEN LAYOUTS

SCHEDULE OF ACCOMMODATION

FLOOR	FLAT TYPE	NO.	TOTAL
GROUND FLOOR	COMMUNAL FLAT TYPE 'A'	2P1B	4 No
	DISABLED FLAT TYPE 'B'	2P1B	2 No
	DISABLED FLAT TYPE 'C'	3P2B	1 No
	WALK UP FLAT TYPE 'E'	2P1B	1 No
FIRST FLOOR	COMMUNAL FLAT TYPE 'A'	2P1B	4 No
	COMMUNAL FLAT TYPE 'D'	3P2B	3 No
	WALK UP FLAT TYPE 'E'	2P1B	1 No
SECOND FLOOR	COMMUNAL FLAT TYPE 'A'	2P1B	4 No
	COMMUNAL FLAT TYPE 'D'	3P2B	3 No
TOTAL No. OF FLATS			23 No

SCHEDULE OF MATERIALS

- WALLS
RENDER: THROUGH COLOURED RENDER
COLOUR: IVORY
- STONE CLADDING: ROCKPANEL STONES OR SIMILAR
COLOUR: MINERAL CHALK
- CLADDING: ROCKPANEL METALLICS BOARD OR SIMILAR
COLOUR: ALUMINIUM GREY
- WINDOWS
DARK GREY PVC-U.

Notes

The drawing is copyright. Any reproduction or use without the written permission of the architect is prohibited. The drawing shall be read in conjunction with the architect's specification and schedule of materials.

Rev

A PROPOSED SITE LAYOUT AND SCHEDULE OF ACCOMMODATION REVISED

B PROPOSED BLOCK PLAN FOR MAX UP FLATS REVISED

C PROPOSED SECOND FLOOR PLAN REVISED

Date: 15.03.2019

Specification

This drawing shall be read in conjunction with the architect's specification and schedule of materials.

Rev

Date: 15.03.2019

PROPOSED CROSS SECTION

Date: MAR 2019

Scale: 1:200

Job No: (SK)005C

Sheet No./Revision: A1/D0

davies jlewelyn and jones
Chartered Architects

The Maltings, East, Trowell Street, Leicester LE1 1JG, Tel: (01533) 443434 Fax: (01533) 443434

Client: HAFOD HOUSING ASSOCIATION

Job: PROPOSED RESIDENTIAL DEVELOPMENT AT 54 METAL STREET, ADAMSOWN